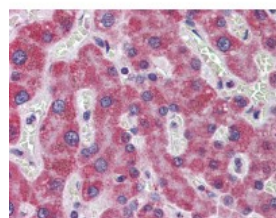




Alpha-Fetoprotein Antibody [6E6]

CATALOG NUMBER: 51-303



Immunohistochemistry of human liver tissue stained using Alpha-Fetoprotein Monoclonal Antibody.

Specifications

SPECIES REACTIVITY:	Human
TESTED APPLICATIONS:	ELISA, IHC, WB
APPLICATIONS:	Alpha-Fetoprotein antibody can be used in ELISA starting at 1:000 - 1:1000, and immunohistochemistry starting at 10 ug/mL.
USER NOTE:	Optimal dilutions for each application to be determined by the researcher.
IMMUNOGEN:	Recombinant fragment of human AFP.
HOST SPECIES:	Mouse

Properties

PURIFICATION:	Protein G Column
PHYSICAL STATE:	Liquid
BUFFER:	Liquid in PBS, 50% glycerol, 0.03% sodium azide
STORAGE CONDITIONS:	Alpha-Fetoprotein antibody should be stored long term (months) at -20 °C and short term (weeks) at 4 °C. As with all antibodies avoid freeze/thaw cycles.
CLONALITY:	Monoclonal
ISOTYPE:	IgG2b
CONJUGATE:	Unconjugated

Additional Info

ALTERNATE NAMES:	AFP, Alpha-1-fetoprotein, Alpha-fetoprotein, HPAFP, Alpha-fetoglobulin, FETA
ACCESSION NO.:	P02771
PROTEIN GI NO.:	120042
OFFICIAL SYMBOL:	AFP
GENE ID:	174

Background

