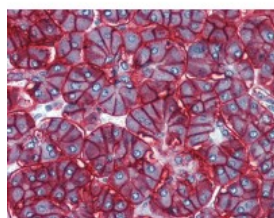




EPCAM Antibody, Monoclonal

CATALOG NUMBER: 51-271



Immunohistochemistry of human pancreas tissue stained using EPCAM Monoclonal Antibody.

Specifications

SPECIES REACTIVITY:	Human
TESTED APPLICATIONS:	IF, IHC
APPLICATIONS:	EPCAM antibody can be used in ELISA, Western Blot starting at 1:1000 - 1:2000, and immunohistochemistry starting at 10 ug/mL.
USER NOTE:	Optimal dilutions for each application to be determined by the researcher.
SPECIFICITY:	Antigen Recognized in Human Species (tested so far) . Cell Lines (tested so far) with colon carcinoma cell lines (HT-29, WiDr, SW1116) . Recognizes the epithelial cell adhesion molecule Ep-CAM (also described as 17-1A antigen or EPG34) .
IMMUNOGEN:	HT-29 colon carcinoma cell line.
HOST SPECIES:	Mouse

Properties

PURIFICATION:	Protein A Column
PHYSICAL STATE:	Liquid
BUFFER:	0.09% sodium azide
STORAGE CONDITIONS:	Store EPCAM antibody at 4 °C or -20 °C. As with all antibodies avoid freeze/thaw cycles.
CLONALITY:	Monoclonal
ISOTYPE:	IgG1
CONJUGATE:	Unconjugated

Additional Info

ALTERNATE NAMES:	EPCAM, 323/A3, ACSTD1, 17-1A, CD326, EGP, EGP34, Epithelial glycoprotein, GA733-2, HNPCC8, Ep-CAM, ESA, HEGP314, KS 1/4 antigen, KS1/4, KSA, M1S2, MIC18, MK-1, MH99, TROP1, TACST-1, TACSTD1, CD326 antigen, CO-17A, DIAR5, EGP-2, EGP314, EGP40, Epithelial glycoprotein 314, HEA125, Ly74, M4S1, MOC31
ACCESSION NO.:	P16422
PROTEIN GI NO.:	160266056

OFFICIAL SYMBOL:	EPCAM
------------------	-------

GENE ID:	4072
----------	------

Background

FOR RESEARCH USE ONLY

December 13, 2016