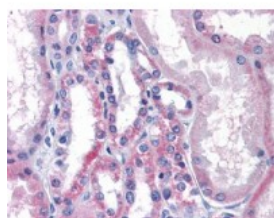


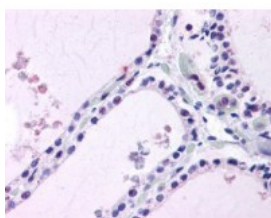


LPCAT1 Antibody

CATALOG NUMBER: 51-263



Immunohistochemistry staining of LPCAT1 in human kidney tissue using LPCAT1 Antibody.



Immunohistochemistry staining of LPCAT1 in human thyroid tissue using LPCAT1 Antibody.

Specifications

SPECIES REACTIVITY:	Chicken, Dog, Gibbon, Gorilla, Hamster, Human, Monkey, Mouse, Pig, Rat, Zebrafish
TESTED APPLICATIONS:	IHC
APPLICATIONS:	LPCAT1 antibody can be used in Western Blot, immunohistochemistry starting at 10 ug/mL, immunocytochemistry, immunoprecipitation, and flow cytometry.
USER NOTE:	Optimal dilutions for each application to be determined by the researcher.
SPECIFICITY:	BLAST analysis of the peptide immunogen showed no homology with other human proteins, except LPCAT2 (60%).
IMMUNOGEN:	LPCAT1 antibody was raised against a KLH conjugated synthetic peptide coresponding to the Internal domain of LPCAT1.
HOST SPECIES:	Rabbit

Properties

PURIFICATION:	Immunoaffinity Chromatography
PHYSICAL STATE:	Liquid
BUFFER:	PBS, 0.1% sodium azide.
STORAGE CONDITIONS:	LPCAT1 antibody should be stored long term (months) at -80 °C and short term (days) at 4 °C. As with all antibodies avoid freeze/thaw cycles.
CLONALITY:	Polyclonal
CONJUGATE:	Unconjugated

Additional Info

ALTERNATE NAMES:	LPCAT1, Acyltransferase like 2, Acyltransferase-like 2, AYTL2, Lpcat, Lyso-PAF acetyltransferase, PFAAP3, LPC acyltransferase 1, LPCAT-1, LysoPAFAT, LysoPC acyltransferase 1, Regulated by phosphonoformate
ACCESSION NO.:	Q8NF37
PROTEIN GI NO.:	110815902
OFFICIAL SYMBOL:	LPCAT1

GENE ID: 79888

Background

FOR RESEARCH USE ONLY

December 13, 2016