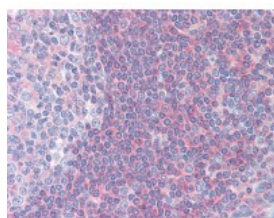




## PPP3R1 Antibody

CATALOG NUMBER: 51-131



Immunohistochemistry staining of  
PPP3R1 in tonsil tissue using PPP3R1  
Antibody.

### Specifications

<b>SPECIES REACTIVITY:</b>	Bovine, Drosophila, Human, Mouse, Rat, Yeast
<b>TESTED APPLICATIONS:</b>	IHC, IP, WB
<b>APPLICATIONS:</b>	PPP3R1 antibody can be used in ELISA, Western Blot starting at 1:500 - 1:1000, and immunohistochemistry starting at 1.25 ug/mL.
<b>USER NOTE:</b>	Optimal dilutions for each application to be determined by the researcher.
<b>IMMUNOGEN:</b>	PPP3R1 antibody was raised against amino acids 46 - 60 of PPP3R1 (Human).
<b>HOST SPECIES:</b>	Rabbit

### Properties

<b>PURIFICATION:</b>	Ammonium Sulfate Precipitation
<b>PHYSICAL STATE:</b>	Liquid
<b>BUFFER:</b>	0.1M Tris-glycine, 0.15M sodium chloride, 0.05% sodium azide, before the addition of glycerol to 30%.
<b>STORAGE CONDITIONS:</b>	Store PPP3R1 antibody at 4 °C or -20 °C. As with all antibodies avoid freeze/thaw cycles.
<b>CLONALITY:</b>	Polyclonal
<b>ISOTYPE:</b>	IgG
<b>CONJUGATE:</b>	Unconjugated

### Additional Info

<b>ALTERNATE NAMES:</b>	PPP3R1, CALNB1, CNA2, Calcineurin B, type I (19kDa), Calcineurin subunit B type 1, CNB, Calcineurin b, CNB1
<b>ACCESSION NO.:</b>	P63098
<b>PROTEIN GI NO.:</b>	52000904
<b>OFFICIAL SYMBOL:</b>	PPP3R1
<b>GENE ID:</b>	5534

### Background

