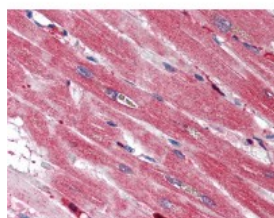




S100A4 Antibody

CATALOG NUMBER: 51-026



Immunohistochemistry staining of S100A4
in heart tissue using S100A4 Antibody.

Specifications

SPECIES REACTIVITY:	Human
TESTED APPLICATIONS:	IHC
APPLICATIONS:	S100A4 antibody can be used in ELISA, Western Blot starting at 1:500 - 1:1000, immunohistochemistry starting at 5 ug/mL, immunofluorescence starting at 10 ug/mL, and immunoprecipitation.
USER NOTE:	Optimal dilutions for each application to be determined by the researcher.
IMMUNOGEN:	S100A4 antibody was raised against a recombinant protein encoding full length human S100A4 (10 - 12kD) (Human).
HOST SPECIES:	Rabbit

Properties

PURIFICATION:	Immunoaffinity Chromatography
PHYSICAL STATE:	Liquid
BUFFER:	10 mM PBS, pH 7.6, 0.2% BSA, 15 mM sodium azide.
STORAGE CONDITIONS:	S100A4 antibody should be stored long term (months) at -20 °C and short term (weeks) at 4 °C. As with all antibodies avoid freeze/thaw cycles.
CLONALITY:	Polyclonal
ISOTYPE:	IgG
CONJUGATE:	Unconjugated

Additional Info

ALTERNATE NAMES:	S100A4, 42A, 18A2, Fibroblast-specific protein-1, FSP1, MTS1, PEL98, Protein Mts1, Calvasculin, CAPL, Metastasin, p9KA, Protein S100-A4
ACCESSION NO.:	P26447
PROTEIN GI NO.:	115601
OFFICIAL SYMBOL:	S100A4
GENE ID:	6275

Background

BACKGROUND: S100 belongs to the family of calcium binding proteins such as calmodulin and troponin C. S100A is composed of an alpha and beta chain whereas S100B is composed of two beta chains. S100 protein is also expressed in the antigen presenting cells such as the Langerhans cells in skin and interdigitating reticulum cells in the paracortex of lymph nodes. Suitable for use in Immunohistochemistry. Other applications have not been tested. Recognizes human S100A4.

FOR RESEARCH USE ONLY

December 13, 2016