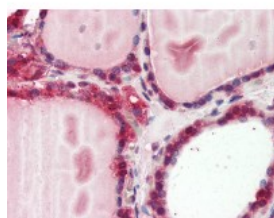




## Cathepsin K Antibody

CATALOG NUMBER: 51-023



Immunohistochemistry staining of Cathepsin K in thyroid tissue using Cathepsin K Antibody.

### Specifications

<b>SPECIES REACTIVITY:</b>	Chicken, Human, Mouse, Pig, Rabbit, Rat
<b>TESTED APPLICATIONS:</b>	IHC, IP, WB
<b>APPLICATIONS:</b>	Cathepsin K antibody can be used in ELISA, Western Blot, immunohistochemistry starting at 5 ug/mL, and immunofluorescence starting at 20 ug/mL.
<b>USER NOTE:</b>	Optimal dilutions for each application to be determined by the researcher.
<b>IMMUNOGEN:</b>	Cathepsin K antibody was raised against a synthetic peptide surrounding amino acid 321 of rat cathepsin K (Rat).
<b>HOST SPECIES:</b>	Rabbit

### Properties

<b>PURIFICATION:</b>	Protein A Column
<b>PHYSICAL STATE:</b>	Liquid
<b>BUFFER:</b>	PBS, pH 7.2, 30% glycerol, 0.5% BSA, 0.01% Thimerosal.
<b>STORAGE CONDITIONS:</b>	Store Cathepsin K antibody at 4 °C or -20 °C. As with all antibodies avoid freeze/thaw cycles.
<b>CLONALITY:</b>	Polyclonal
<b>CONJUGATE:</b>	Unconjugated

### Additional Info

<b>ALTERNATE NAMES:</b>	CTSK, Cathepsin K, Cathepsin K (pseudosarcoidosis), Cathepsin O1, Cathepsin O2, Cathepsin X, CTSO2, PKND, Procathepsin K, PYCD, Cathepsin O, CTSO2, CTSO1
<b>ACCESSION NO.:</b>	P43235
<b>PROTEIN GI NO.:</b>	1168793
<b>OFFICIAL SYMBOL:</b>	CTSK
<b>GENE ID:</b>	1513

### Background

FOR RESEARCH USE ONLY

