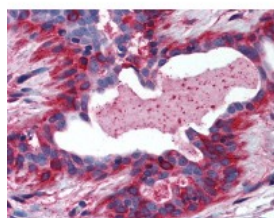




## Prolactin Receptor Antibody [AN4.3]

CATALOG NUMBER: 49-997



Immunohistochemistry staining of  
Prolactin Receptor in breast tissue using  
Prolactin Receptor monoclonal Antibody.

### Specifications

<b>SPECIES REACTIVITY:</b>	Human
<b>TESTED APPLICATIONS:</b>	ELISA, IHC
<b>APPLICATIONS:</b>	Prolactin Receptor antibody can be used in immunohistochemistry starting at 20 ug/mL.
<b>USER NOTE:</b>	Optimal dilutions for each application to be determined by the researcher.
<b>IMMUNOGEN:</b>	Prolactin Receptor monoclonal antibody was raised against semi - purified human prolactin receptor (70kD) (Human).
<b>HOST SPECIES:</b>	Mouse

### Properties

<b>PURIFICATION:</b>	Protein G Column
<b>PHYSICAL STATE:</b>	Liquid
<b>BUFFER:</b>	10mM PBS, pH 7.4, 0.2% BSA, 0.09% sodium azide, before the addition of glycerol to 40%
<b>STORAGE CONDITIONS:</b>	Prolactin Receptor antibody should be stored long term (months) at -20 °C and short term (weeks) at 4 °C. As with all antibodies avoid freeze/thaw cycles.
<b>CLONALITY:</b>	Monoclonal
<b>ISOTYPE:</b>	IgG1
<b>CONJUGATE:</b>	Unconjugated

### Additional Info

<b>ALTERNATE NAMES:</b>	PRLR, HPRL receptor, PRL-R, HPRLrI, Prolactin receptor
<b>ACCESSION NO.:</b>	P16471
<b>PROTEIN GI NO.:</b>	130321
<b>OFFICIAL SYMBOL:</b>	PRLR
<b>GENE ID:</b>	5618

### Background

**BACKGROUND:**

Prolactin is a pituitary hormone involved in the stimulation of milk production, salt and water regulation, growth, development and reproduction. The initial step in its action is the binding to a specific membrane receptor (prolactin receptor) which belongs to the superfamily of class 1 cytokine receptors. The function of the prolactin receptor is mediated, at least in part, by two families of signaling molecules: Janus kinases and signal transducers and activators of transcription. Western Blot (Ab 1-2 ug/mL for 2hrs at RT) Immunohistology (Formalin/paraffin) (Use Ab at 1-2 ug/mL for 30 min at RT) (Staining of formalin/paraffin tissues REQUIRES digestion of tissue sections with pepsin at 1 mg/mL Tris-HCl, pH 2.0 for 15 min at RT or 10 min at 37 deg C) Positive Control Breast carcinoma Cellular Localization Cell membrane/cytoplasmic Recognizes Prolactin Receptor. Species Crossreactivity: Human.

---

**FOR RESEARCH USE ONLY**

December 13, 2016