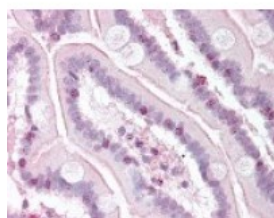




RTEL1 Antibody

CATALOG NUMBER: 49-797



Immunohistochemistry staining of RTEL1
in small intestine tissue using RTEL1
Antibody.

Specifications

SPECIES REACTIVITY:	Human, Mouse
TESTED APPLICATIONS:	ELISA, IHC, WB
APPLICATIONS:	RTEL1 antibody can be used in ELISA, immunohistochemistry starting at 5 ug/mL, and immunofluorescence.
USER NOTE:	Optimal dilutions for each application to be determined by the researcher.
IMMUNOGEN:	RTEL1 antibody was raised against a peptide near the N-Terminus of RTEL1 (Human).
HOST SPECIES:	Rabbit

Properties

PURIFICATION:	Immunoaffinity Chromatography
PHYSICAL STATE:	Liquid
BUFFER:	PBS, 0.01% sodium azide, 50% glycerol.
STORAGE CONDITIONS:	Store RTEL1 antibody at 4 °C or -20 °C. As with all antibodies avoid freeze/thaw cycles.
CLONALITY:	Polyclonal
CONJUGATE:	Unconjugated

Additional Info

ALTERNATE NAMES:	RTEL1, BK3184A7.3, DKFZP434C013, Novel helicase-like, KIAA1088, Regulator of telomere length, RTEL, NHL, C20orf41
ACCESSION NO.:	Q9NZ71
PROTEIN GI NO.:	229462743
OFFICIAL SYMBOL:	RTEL1
GENE ID:	51750

Background

FOR RESEARCH USE ONLY

