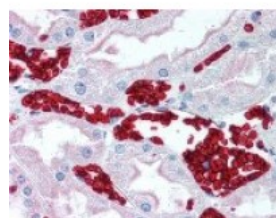




Glycophorin A Antibody [HIR2]

CATALOG NUMBER: 49-243



Immunohistochemistry staining of GYPA
in kidney, red blood cells using GYPA
Antibody.

Specifications

SPECIES REACTIVITY:	Human
TESTED APPLICATIONS:	FACS, IHC
APPLICATIONS:	Glycophorin A antibody can be used in immunohistochemistry starting at 15 ug/mL.
USER NOTE:	Optimal dilutions for each application to be determined by the researcher.
HOST SPECIES:	Mouse

Properties

PURIFICATION:	Affinity Chromatography
PHYSICAL STATE:	Liquid
BUFFER:	Phosphate-buffered solution, pH 7.2, 0.09% sodium azide.
STORAGE CONDITIONS:	Store Glycophorin A antibody undiluted at 4 °C.
CLONALITY:	Monoclonal
ISOTYPE:	IgG2b
CONJUGATE:	Unconjugated

Additional Info

ALTERNATE NAMES:	GPA, Glycophorin-A, MN sialoglycoproteinMN, MNS, GPSAT, PAS-2, CD235a, GPErik, HGpMiV, HGpMiXI, HGpSta(C)
ACCESSION NO.:	P02724
PROTEIN GI NO.:	259016238
OFFICIAL SYMBOL:	GYPA
GENE ID:	2993

Background

FOR RESEARCH USE ONLY

