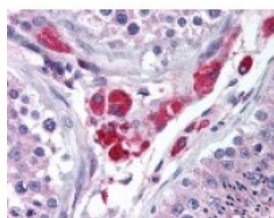




HIPK3 Antibody

CATALOG NUMBER: 48-944



Immunohistochemistry staining of HIPK3
in testis tissue using HIPK3 Antibody.

Specifications

SPECIES REACTIVITY:	Chimpanzee, Dog, Human, Mouse, Rat
TESTED APPLICATIONS:	IHC, WB
APPLICATIONS:	ImmunoprecipitationK3 antibody can be used in ELISA, Western Blot, and immunohistochemistry starting at 5 ug/mL.
USER NOTE:	Optimal dilutions for each application to be determined by the researcher.
SPECIFICITY:	A portion of amino acids 850-900 of human HIPK3.
IMMUNOGEN:	A portion of amino acids 850-900 of human HIPK3.
HOST SPECIES:	Rabbit

Properties

PURIFICATION:	Immunoaffinity Chromatography
PHYSICAL STATE:	Liquid
BUFFER:	PBS, 0.2% gelatin, 0.05% sodium azide.
STORAGE CONDITIONS:	HIPK3 antibody can be stored short term 4 °C. For long term storage aliquot and store at -20 °C. As with all antibodies avoid freeze/thaw cycles.
CLONALITY:	Polyclonal
CONJUGATE:	Unconjugated

Additional Info

ALTERNATE NAMES:	HIPK3, ANPK, FIST, FIST3, Homolog of protein kinase YAK1, DYRK6, PKY, YAK1
ACCESSION NO.:	Q9H422
PROTEIN GI NO.:	61213741
OFFICIAL SYMBOL:	HIPK3
GENE ID:	10114

Background

BACKGROUND:	HIPK3, a nuclear serine/threonine kinase similar to the MNB/DYRK type protein kinases. HIPK3 may be involved
--------------------	--

in growth control pathways and in multidrug resistance. HIPK3 interacts with Fas and FADD and modulates FasL-induced JNK activation.

FOR RESEARCH USE ONLY

December 13, 2016