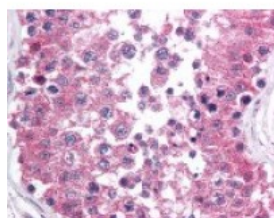




RAD1 Antibody [4126]

CATALOG NUMBER: 48-857



Immunohistochemistry staining of RAD1 in testis tissue using RAD1 monoclonal Antibody.

Specifications

SPECIES REACTIVITY:	Human
TESTED APPLICATIONS:	IHC, WB
APPLICATIONS:	RAD1 antibody can be used in ELISA, Western Blot, and immunohistochemistry starting at 5 ug/mL.
USER NOTE:	This product ships on dry ice.
IMMUNOGEN:	RAD1 monoclonal antibody was raised against an amino terminal fragment of RAD1 (Human).
HOST SPECIES:	Mouse

Properties

PURIFICATION:	Protein G Column
PHYSICAL STATE:	Liquid
BUFFER:	PBS, pH 7.2. No preservatives added.
STORAGE CONDITIONS:	RAD1 antibody should be stored long term (months) at -80 °C and short term (days) at -20 °C. As with all antibodies avoid freeze/thaw cycles.
CLONALITY:	Monoclonal
ISOTYPE:	IgG
CONJUGATE:	Unconjugated

Additional Info

ALTERNATE NAMES:	RAD1, DNA repair exonuclease REC1, RAD1 (S. pombe) homolog, REC1, RAD1 homolog (S. pombe), Exonuclease homolog RAD1, HRAD1
ACCESSION NO.:	O60671
PROTEIN GI NO.:	74735450
OFFICIAL SYMBOL:	RAD1
GENE ID:	5810

Background

BACKGROUND:

Human Rad1 is a component of a heterotrimeric PCNA-like complex that also contains the Rad9 and Hus1 proteins. This complex is believed to be involved in cellular responses to DNA damage, possibly by associating with Rad17 and several components of the PCNA-loading heteropentamer, replication factor C. Human Rad1 exhibits significant homology to Rad1 from *S. pombe*, and its expression in yeast *rad1* mutants has been shown to partially restore radiation resistance and G2-checkpoint activity. It has also been shown to possess exonuclease activity.

FOR RESEARCH USE ONLY

December 13, 2016