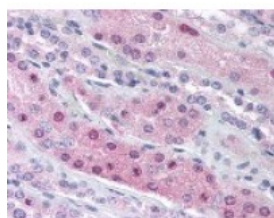




## NCOA3 Antibody [AC3]

CATALOG NUMBER: 48-854



Immunohistochemistry staining of NCOA3  
in kidney tissue using NCOA3 monoclonal  
Antibody.

### Specifications

<b>SPECIES REACTIVITY:</b>	Human
<b>TESTED APPLICATIONS:</b>	IHC, WB
<b>APPLICATIONS:</b>	NCOA3 antibody can be used in ELISA, Western Blot, and immunohistochemistry starting at 5 ug/mL.
<b>USER NOTE:</b>	Optimal dilutions for each application to be determined by the researcher.
<b>IMMUNOGEN:</b>	NCOA3 monoclonal antibody was raised against a synthetic peptide to the C-Terminal end of NCOA3 (Human).
<b>HOST SPECIES:</b>	Mouse

### Properties

<b>PURIFICATION:</b>	Protein G Column
<b>PHYSICAL STATE:</b>	Liquid
<b>BUFFER:</b>	PBS, pH 7.4.
<b>STORAGE CONDITIONS:</b>	Store NCOA3 antibody at 4 °C or -20 °C. As with all antibodies avoid freeze/thaw cycles.
<b>CLONALITY:</b>	Monoclonal
<b>ISOTYPE:</b>	IgG 1
<b>CONJUGATE:</b>	Unconjugated

### Additional Info

<b>ALTERNATE NAMES:</b>	NCOA3, ACTR, AIB1, BHLHe42, CAGH16, CBP-interacting protein, CTG26, AIB-1, P/CIP, TNRC14, TRAM-1, Nuclear receptor coactivator 3, PCIP, RAC-3, SRC3, TNRC16, NCoA-3, SRC-3
<b>ACCESSION NO.:</b>	Q9Y6Q9
<b>PROTEIN GI NO.:</b>	23396777
<b>OFFICIAL SYMBOL:</b>	NCOA3
<b>GENE ID:</b>	8202

### Background

<b>BACKGROUND:</b>	AIB1-AC3 recognizes AIB1, a member of the SRC-1 family of nuclear receptor coactivators with an apparent
--------------------	--

molecular weight of 160 kDa. The AIB1 gene has been mapped to region 20q12 and has been shown to be amplified in breast tumors and pancreatic cancer cell lines. AIB1 interacts in a ligand-dependent fashion with the estrogen receptor to enhance estrogen-dependent transcriptional gene activation. The protein encoded by this gene is a nuclear receptor coactivator that interacts with nuclear hormone receptors to enhance their transcriptional activator functions. The encoded protein has histone acetyltransferase activity and recruits p300/CBP-associated factor and CREB binding protein as part of a multisubunit coactivation complex. This protein is initially found in the cytoplasm but is translocated into the nucleus upon phosphorylation. Two transcript variants encoding different isoforms have been found for this gene. In addition, a polymorphic repeat region is found in the C-terminus of the encoded protein.

---

**FOR RESEARCH USE ONLY**

December 13, 2016