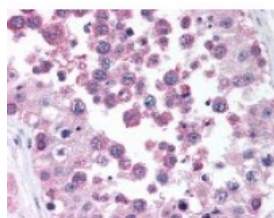




## DNA Ligase III Antibody [4C11]

CATALOG NUMBER: 48-849



Immunohistochemistry staining of DNA  
Ligase III in testis tissue using DNA Ligase  
III monoclonal Antibody.

### Specifications

<b>SPECIES REACTIVITY:</b>	Human
<b>TESTED APPLICATIONS:</b>	IHC, WB
<b>APPLICATIONS:</b>	DNA Ligase III antibody can be used in ELISA, Western Blot, and immunohistochemistry starting at 5 ug/mL.
<b>USER NOTE:</b>	Optimal dilutions for each application to be determined by the researcher.
<b>IMMUNOGEN:</b>	DNA Ligase III monoclonal antibody was raised against recombinant full length DNA Ligase III (Human).
<b>HOST SPECIES:</b>	Mouse

### Properties

<b>PURIFICATION:</b>	Protein G Column
<b>PHYSICAL STATE:</b>	Liquid
<b>BUFFER:</b>	PBS.
<b>STORAGE CONDITIONS:</b>	DNA Ligase III antibody should be stored long term (months) at -20 °C and short term (weeks) at 4 °C. As with all antibodies avoid freeze/thaw cycles.
<b>CLONALITY:</b>	Monoclonal
<b>ISOTYPE:</b>	IgG1
<b>CONJUGATE:</b>	Unconjugated

### Additional Info

<b>ALTERNATE NAMES:</b>	LIG3, DNA ligase III, Ligase II, DNA, ATP-dependent, LIG2, Ligase III, DNA, ATP-dependent, DNA ligase 3
<b>ACCESSION NO.:</b>	P49916
<b>PROTEIN GI NO.:</b>	251757259
<b>OFFICIAL SYMBOL:</b>	LIG3
<b>GENE ID:</b>	3980

### Background

**BACKGROUND:** There are four distinct ligase proteins found in mammalian cells. The activity of these DNA ligases is required for

the joining of DNA strand breaks that occur during DNA replication, repair and recombination. DNA Ligase III gene product migrates as a 100 kDa (α-form) protein in somatic tissues, is ubiquitously expressed and complexes with XRCC-1 and a 97 kDa (β-form) protein that is found in testis. DNA Ligase III is involved in rejoining DNA single-strand breaks and in the base excision repair pathway.

---

**FOR RESEARCH USE ONLY**

December 13, 2016