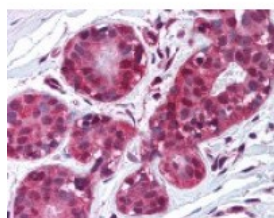




## Metalloproteinase Inhibitor 2 Antibody [F27P3A4]

CATALOG NUMBER: 48-811



Immunohistochemistry staining of  
Metalloproteinase Inhibitor 2 in breast  
tissue using Metalloproteinase Inhibitor 2  
monoclonal Antibody.

### Specifications

<b>SPECIES REACTIVITY:</b>	Bovine, Chicken, Dog, Gibbon, Gorilla, Guinea Pig, Hamster, Horse, Human, Monkey, Mouse, Pig, Rat, Sheep, Zebrafish
<b>TESTED APPLICATIONS:</b>	ELISA, IHC, WB
<b>APPLICATIONS:</b>	Metalloproteinase Inhibitor 2 antibody can be used in ELISA, and immunohistochemistry starting at 10 ug/mL.
<b>USER NOTE:</b>	Optimal dilutions for each application to be determined by the researcher.
<b>IMMUNOGEN:</b>	Metalloproteinase Inhibitor 2 monoclonal antibody was raised against a ovalbumin - conjugated synthetic peptide of Metalloproteinase Inhibitor 2 (Human).
<b>HOST SPECIES:</b>	Mouse

### Properties

<b>PURIFICATION:</b>	Affinity Chromatography
<b>PHYSICAL STATE:</b>	Liquid
<b>BUFFER:</b>	Phosphate-buffered solution, pH 7.2, 0.09% sodium azide at 0.5 mg/ml.
<b>STORAGE CONDITIONS:</b>	Store Metalloproteinase Inhibitor 2 antibody at 4 °C, <b>Avoid Freezing</b>
<b>CLONALITY:</b>	Monoclonal
<b>ISOTYPE:</b>	IgG2a
<b>CONJUGATE:</b>	Unconjugated

### Additional Info

<b>ALTERNATE NAMES:</b>	TIMP2, Metalloproteinase inhibitor 2, TIMP-2, CSC-21K
<b>ACCESSION NO.:</b>	P16035
<b>PROTEIN GI NO.:</b>	135854
<b>OFFICIAL SYMBOL:</b>	TIMP2
<b>GENE ID:</b>	7077

