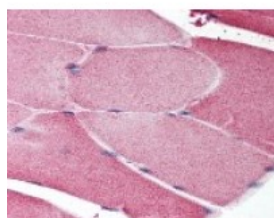




NOS1 Antibody

CATALOG NUMBER: 48-752



Immunohistochemistry staining of NOS1 in skeletal muscle tissue using NOS1 Antibody.

Specifications

SPECIES REACTIVITY:	Bat, Dog, Gorilla, Horse, Human, Monkey, Mouse, Rabbit
TESTED APPLICATIONS:	ICC, IHC, IP, WB
APPLICATIONS:	NOS1 antibody can be used in ELISA, and immunohistochemistry starting at 5 ug/mL.
USER NOTE:	Optimal dilutions for each application to be determined by the researcher.
IMMUNOGEN:	NOS1 antibody was raised against amino acids 1422 - 1433 of NOS1 (Human).
HOST SPECIES:	Rabbit

Properties

PURIFICATION:	Immunoaffinity Chromatography
PHYSICAL STATE:	Liquid
BUFFER:	TBS, pH 7.4, 0.5 mg/mL BSA, 50% glycerol, 0.02% sodium azide.
STORAGE CONDITIONS:	NOS1 antibody should be stored long term (months) at -20 °C and short term (weeks) at 4 °C. As with all antibodies avoid freeze/thaw cycles.
CLONALITY:	Polyclonal
ISOTYPE:	IgG
CONJUGATE:	Unconjugated

Additional Info

ALTERNATE NAMES:	NOS1, BNOS, Constitutive NOS, IHPS1, NNOS, NC-NOS, Nitric oxide synthase, brain, N-NOS, Neuronal NOS, NOS, NOS type I, Nos, type i
ACCESSION NO.:	P29475
PROTEIN GI NO.:	1709333
OFFICIAL SYMBOL:	NOS1
GENE ID:	4842

Background

