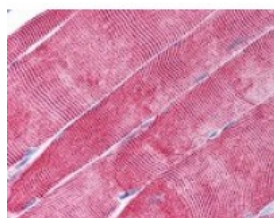




## Desmin Antibody [10H7D2]

CATALOG NUMBER: 48-734



Immunohistochemistry staining of Desmin  
in skeletal muscle tissue using Desmin  
monoclonal Antibody.

### Specifications

<b>SPECIES REACTIVITY:</b>	Human
<b>TESTED APPLICATIONS:</b>	ELISA, IHC, WB
<b>APPLICATIONS:</b>	Desmin antibody can be used in ELISA starting at 1:15000 - 1:65000, Western Blot starting at 1:500 - 1:2000, and immunohistochemistry starting at 5 ug/mL.
<b>USER NOTE:</b>	Optimal dilutions for each application to be determined by the researcher.
<b>IMMUNOGEN:</b>	Desmin monoclonal antibody was raised against Ni-NTA purified truncated recombinant Desmin expressed in E. Coli strain BL21 (DE3)
<b>HOST SPECIES:</b>	Mouse

### Properties

<b>PURIFICATION:</b>	Protein A Column
<b>PHYSICAL STATE:</b>	Liquid
<b>BUFFER:</b>	PBS, 0.03% sodium azide.
<b>STORAGE CONDITIONS:</b>	Store Desmin antibody at 4 °C or -20 °C. As with all antibodies avoid freeze/thaw cycles.
<b>CLONALITY:</b>	Monoclonal
<b>ISOTYPE:</b>	IgG1
<b>CONJUGATE:</b>	Unconjugated

### Additional Info

<b>ALTERNATE NAMES:</b>	DES, ARVC7, ARVD7, CMD1I, CSM1, CSM2, MFM1, SCPNK, Desmin, Intermediate filament protein
<b>ACCESSION NO.:</b>	P17661
<b>PROTEIN GI NO.:</b>	6686280
<b>OFFICIAL SYMBOL:</b>	DES
<b>GENE ID:</b>	1674

### Background

