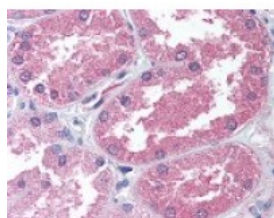




AADAT Antibody

CATALOG NUMBER: 48-416



Immunohistochemistry staining of AADAT
in kidney tissue using AADAT Antibody.

Specifications

SPECIES REACTIVITY:	Gibbon, Gorilla, Human
TESTED APPLICATIONS:	IHC
APPLICATIONS:	AADAT antibody can be used in Western Blot starting at 0.5 - 2 ug/mL, immunohistochemistry starting at 10 ug/mL, and immunoprecipitation.
USER NOTE:	Optimal dilutions for each application to be determined by the researcher.
SPECIFICITY:	BLAST analysis of the peptide immunogen showed no homology with other human proteins.
IMMUNOGEN:	AADAT antibody was raised against a peptide located in the N-Terminal region of AADAT (Human).
HOST SPECIES:	Rabbit

Properties

PURIFICATION:	Immunoaffinity Chromatography
PHYSICAL STATE:	Liquid
BUFFER:	PBS, 0.1% sodium azide.
STORAGE CONDITIONS:	Store AADAT antibody at 4 °C for short term applications. For long term storage, aliquot and -20 °C.
CLONALITY:	Polyclonal
CONJUGATE:	Unconjugated

Additional Info

ALTERNATE NAMES:	AADAT, 2-aminoadipate transaminase, KAT2, KAT/AadAT, KATII, Kynurenine aminotransferase II, Aminoadipate aminotransferase
ACCESSION NO.:	Q8N5Z0
PROTEIN GI NO.:	46395904
OFFICIAL SYMBOL:	AADAT
GENE ID:	51166

Background

BACKGROUND: Kynurenine aminotransferase catalyzes the irreversible transamination of the L-tryptophan metabolite L-

kynurenine to form kynurenic acid. Kynurenic acid is an antagonist at the glycine site of NMDA receptors and increased levels of kynurenic acid are thought to exert a neuroprotective action in some pathological conditions.

FOR RESEARCH USE ONLY

December 13, 2016