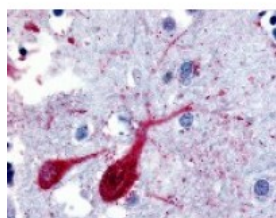




## SLC5A9 Antibody

CATALOG NUMBER: 48-189



Immunohistochemistry staining of SLC5A9  
in brain cortex tissue using SLC5A9  
Antibody.

### Specifications

<b>SPECIES REACTIVITY:</b>	Human
<b>TESTED APPLICATIONS:</b>	IHC
<b>APPLICATIONS:</b>	SLC5A9 antibody can be used in ELISA, Western Blot, and immunohistochemistry starting at 5 ug/mL.
<b>USER NOTE:</b>	Optimal dilutions for each application to be determined by the researcher.
<b>SPECIFICITY:</b>	BLAST analysis of the peptide immunogen showed no homology with other human proteins, except SLC5A3 (65%), SLC5A11 (59%).
<b>IMMUNOGEN:</b>	SLC5A9 antibody was raised against a peptide located in the cytoplasmic domain of SLC5A9 (Human).
<b>HOST SPECIES:</b>	Rabbit

### Properties

<b>PURIFICATION:</b>	Immunoaffinity Chromatography
<b>PHYSICAL STATE:</b>	Liquid
<b>BUFFER:</b>	PBS, 0.1% sodium azide.
<b>STORAGE CONDITIONS:</b>	SLC5A9 antibody should be stored long term (months) at -80 °C and short term (days) at 4 °C. As with all antibodies avoid freeze/thaw cycles.
<b>CLONALITY:</b>	Polyclonal
<b>CONJUGATE:</b>	Unconjugated

### Additional Info

<b>ALTERNATE NAMES:</b>	SLC5A9, HSGLT4, Sodium/glucose cotransporter 4, Na(+)/glucose cotransporter 4, SGLT4
<b>ACCESSION NO.:</b>	Q2M3M2
<b>PROTEIN GI NO.:</b>	189046189
<b>OFFICIAL SYMBOL:</b>	SLC5A9
<b>GENE ID:</b>	200010

### Background

