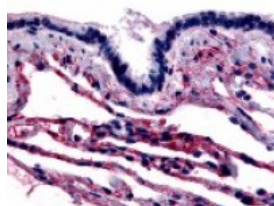




Caveolin-1 Antibody

CATALOG NUMBER: 48-185



Immunohistochemistry staining of Caveolin-1 in respiratory epithelium and alveoli tissue using Caveolin-1 Antibody.

Specifications

SPECIES REACTIVITY:	Chimpanzee, Gibbon, Gorilla, Human, Monkey
TESTED APPLICATIONS:	IHC
APPLICATIONS:	Caveolin-1 antibody can be used in ELISA, Western Blot, immunohistochemistry starting at 5 ug/mL, and immunofluorescence starting at 10 ug/mL.
USER NOTE:	Optimal dilutions for each application to be determined by the researcher.
SPECIFICITY:	BLAST analysis of the peptide immunogen showed no homology with other human proteins.
IMMUNOGEN:	Caveolin - 1 antibody was raised against a peptide located in the N-Terminal region of Caveolin - 1 (Human).
HOST SPECIES:	Rabbit

Properties

PURIFICATION:	Immunoaffinity Chromatography
PHYSICAL STATE:	Liquid
BUFFER:	PBS, 0.1% sodium azide.
STORAGE CONDITIONS:	Caveolin-1 antibody should be stored long term (months) at -80 °C and short term (days) at 4 °C. As with all antibodies avoid freeze/thaw cycles.
CLONALITY:	Polyclonal
CONJUGATE:	Unconjugated

Additional Info

ALTERNATE NAMES:	CAV1, Caveolin-1, CGL3, CAV, MSTP085, VIP21, BSCL3
ACCESSION NO.:	Q03135
PROTEIN GI NO.:	13637934
OFFICIAL SYMBOL:	CAV1
GENE ID:	857

Background

BACKGROUND:

Caveolin 1 is the main component of the caveolae plasma membranes found in most cell types. Caveolin 1 functions as a membrane adaptor to link integrin subunits to the tyrosine kinase FYN, an initiating step in coupling integrins to the Ras-ERK pathway and promoting cell cycle progression. CAV1 may also be a tumor suppressor gene and a negative regulator of the Ras-p42/44 MAP kinase cascade.

FOR RESEARCH USE ONLY

December 13, 2016