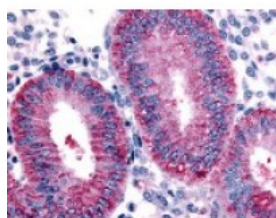




## DKK1 Antibody

CATALOG NUMBER: 48-183



Immunohistochemistry staining of DKK1 in uterus, endometrium tissue using DKK1 Antibody.

### Specifications

<b>SPECIES REACTIVITY:</b>	Gibbon, Gorilla, Human
<b>TESTED APPLICATIONS:</b>	IHC
<b>APPLICATIONS:</b>	DKK1 antibody can be used in Western Blot starting at 1 - 3 ug/mL, and immunohistochemistry starting at 10 ug/mL.
<b>USER NOTE:</b>	Optimal dilutions for each application to be determined by the researcher.
<b>SPECIFICITY:</b>	BLAST analysis of the peptide immunogen showed no homology with other human proteins.
<b>IMMUNOGEN:</b>	DKK1 antibody was raised against a peptide from an internal domain of DKK1 (Human).
<b>HOST SPECIES:</b>	Rabbit

### Properties

<b>PURIFICATION:</b>	Immunoaffinity Chromatography
<b>PHYSICAL STATE:</b>	Liquid
<b>BUFFER:</b>	PBS, 0.1% sodium azide.
<b>STORAGE CONDITIONS:</b>	DKK1 antibody should be stored long term (months) at -80 °C and short term (days) at 4 °C. As with all antibodies avoid freeze/thaw cycles.
<b>CLONALITY:</b>	Polyclonal
<b>CONJUGATE:</b>	Unconjugated

### Additional Info

<b>ALTERNATE NAMES:</b>	DKK1, Dickkopf-1 like, DKK-1, Dickkopf-1, Dickkopf-related protein 1, Dickkopf related protein-1, HDkk-1, Hdck1, Dickkopf-like protein 1, SK
<b>ACCESSION NO.:</b>	O94907
<b>PROTEIN GI NO.:</b>	13124053
<b>OFFICIAL SYMBOL:</b>	DKK1
<b>GENE ID:</b>	22943

FOR RESEARCH USE ONLY

December 13, 2016