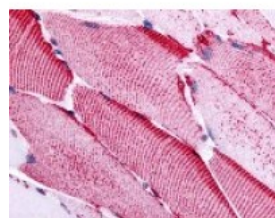




SLC5A10 Antibody

CATALOG NUMBER: 48-172



Immunohistochemistry staining of SLC5A10 in skeletal muscle tissue using SLC5A10 Antibody.

Specifications

SPECIES REACTIVITY:	Gibbon, Gorilla, Human
TESTED APPLICATIONS:	IHC
APPLICATIONS:	SLC5A10 antibody can be used in ELISA, Western Blot, immunohistochemistry starting at 5 ug/mL, and immunofluorescence starting at 10 ug/mL.
USER NOTE:	Optimal dilutions for each application to be determined by the researcher.
SPECIFICITY:	BLAST analysis of the peptide immunogen showed no homology with other human proteins, except SLC5A1 (67%).
IMMUNOGEN:	SLC5A10 antibody was raised against a peptide located in the cytoplasmic domain of SLC5A10 (Human).
HOST SPECIES:	Rabbit

Properties

PURIFICATION:	Immunoaffinity Chromatography
PHYSICAL STATE:	Liquid
BUFFER:	PBS, 0.1% sodium azide.
STORAGE CONDITIONS:	SLC5A10 antibody should be stored long term (months) at -80 °C and short term (days) at 4 °C. As with all antibodies avoid freeze/thaw cycles.
CLONALITY:	Polyclonal
CONJUGATE:	Unconjugated

Additional Info

ALTERNATE NAMES:	SLC5A10, SGLT-5, Sodium/glucose cotransporter 5, Na(+)/glucose cotransporter 5, SGLT5, RK-D
ACCESSION NO.:	A0PJK1
PROTEIN GI NO.:	160358736
OFFICIAL SYMBOL:	SLC5A10
GENE ID:	125206

FOR RESEARCH USE ONLY

December 13, 2016