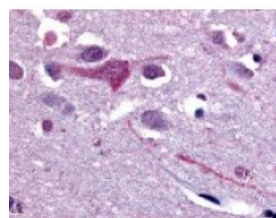




SLC5A9 Antibody

CATALOG NUMBER: 48-169



Immunohistochemistry staining of SLC5A9
in brain cortex tissue using SLC5A9
Antibody.

Specifications

SPECIES REACTIVITY:	Gorilla, Human
TESTED APPLICATIONS:	IHC
APPLICATIONS:	SLC5A9 antibody can be used in ELISA, Western Blot, immunohistochemistry starting at 5 ug/mL, and immunofluorescence starting at 10 ug/mL.
USER NOTE:	Optimal dilutions for each application to be determined by the researcher.
SPECIFICITY:	BLAST analysis of the peptide immunogen showed no homology with other human proteins.
IMMUNOGEN:	SLC5A9 antibody was raised against a peptide located near the C-Terminal region of SLC5A9 (Human).
HOST SPECIES:	Rabbit

Properties

PURIFICATION:	Immunoaffinity Chromatography
PHYSICAL STATE:	Liquid
BUFFER:	PBS, 0.1% sodium azide.
STORAGE CONDITIONS:	SLC5A9 antibody should be stored long term (months) at -80 °C and short term (days) at 4 °C. As with all antibodies avoid freeze/thaw cycles.
CLONALITY:	Polyclonal
CONJUGATE:	Unconjugated

Additional Info

ALTERNATE NAMES:	SLC5A9, HSGLT4, Sodium/glucose cotransporter 4, Na(+)/glucose cotransporter 4, SGLT4
ACCESSION NO.:	Q2M3M2
PROTEIN GI NO.:	189046189
OFFICIAL SYMBOL:	SLC5A9
GENE ID:	200010

Background

