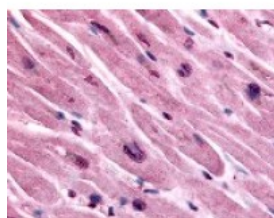




CHRM3 Antibody

CATALOG NUMBER: 48-115



Immunohistochemistry staining of CHRM3
in heart tissue using CHRM3 Antibody.

Specifications

| | |
|-----------------------------|---|
| SPECIES REACTIVITY: | Chimpanzee, Gibbon, Gorilla, Human, Monkey |
| TESTED APPLICATIONS: | ELISA, IHC |
| APPLICATIONS: | CHRM3 antibody can be used in ELISA, and immunohistochemistry starting at 10 ug/mL. |
| USER NOTE: | Optimal dilutions for each application to be determined by the researcher. |
| SPECIFICITY: | BLAST analysis of the peptide immunogen showed no homology with other human proteins. |
| IMMUNOGEN: | CHRM3 antibody was raised against a peptide located in the 3rd cytoplasmic domain of CHRM3 (Human). |
| HOST SPECIES: | Rabbit |

Properties

| | |
|----------------------------|--|
| PURIFICATION: | Immunoaffinity Chromatography |
| PHYSICAL STATE: | Liquid |
| BUFFER: | PBS, 0.1% sodium azide. |
| STORAGE CONDITIONS: | CHRM3 antibody should be stored long term (months) at -80 °C and short term (days) at 4 °C. As with all antibodies avoid freeze/thaw cycles. |
| CLONALITY: | Polyclonal |
| CONJUGATE: | Unconjugated |

Additional Info

| | |
|-------------------------|---|
| ALTERNATE NAMES: | CHRM3, M3, Muscarinic receptor M3, Muscarinic M3 receptor, EGBRS, HM3, M3 muscarinic receptor |
| ACCESSION NO.: | P20309 |
| PROTEIN GI NO.: | 113125 |
| OFFICIAL SYMBOL: | CHRM3 |
| GENE ID: | 1131 |

Background

| | |
|--------------------|--|
| BACKGROUND: | Muscarinic acetylcholine receptor 3 is an Acetylcholine Receptor that controls smooth muscle contraction by mediating phosphoinositide hydrolysis and Ca ²⁺ mobilization. Activation of this receptor causes secretion in |
|--------------------|--|

glandular tissues. Mouse studies suggest that the M3 receptor may play a role in appetite stimulation and food intake.

FOR RESEARCH USE ONLY

December 13, 2016