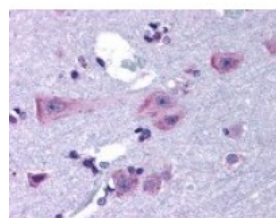




DRD3 Antibody

CATALOG NUMBER: 48-114



Immunohistochemistry staining of DRD3 in brain cortex tissue using DRD3 Antibody.

Specifications

SPECIES REACTIVITY:	Chimpanzee, Gorilla, Human, Monkey
TESTED APPLICATIONS:	ELISA, IHC
APPLICATIONS:	DRD3 antibody can be used in ELISA, and immunohistochemistry starting at 10 ug/mL.
USER NOTE:	Optimal dilutions for each application to be determined by the researcher.
SPECIFICITY:	BLAST analysis of the peptide immunogen showed no homology with other human proteins.
IMMUNOGEN:	DRD3 antibody was raised against a peptide located in the 3rd cytoplasmic domain of DRD3 (Human).
HOST SPECIES:	Rabbit

Properties

PURIFICATION:	Immunoaffinity Chromatography
PHYSICAL STATE:	Liquid
BUFFER:	PBS, 0.1% sodium azide.
STORAGE CONDITIONS:	DRD3 antibody should be stored long term (months) at -80 °C and short term (days) at 4 °C. As with all antibodies avoid freeze/thaw cycles.
CLONALITY:	Polyclonal
CONJUGATE:	Unconjugated

Additional Info

ALTERNATE NAMES:	DRD3, D3 dopamine receptor, D3DR, Dopamine 3 receptor, Dopamine receptor D3, D3nf, Essential tremor 1, ETM1, FET1, D(3) dopamine receptor, Dopamine D3 receptor
ACCESSION NO.:	P35462
PROTEIN GI NO.:	1169206
OFFICIAL SYMBOL:	DRD3
GENE ID:	1814

Background

BACKGROUND: The DRD3 Dopamine Receptor is expressed in brain regions associated with cognitive, emotional, and endocrine

functions. DRD3 mediates the effects of drugs used in the treatment of schizophrenia and Parkinson's disease. DRD3 also binds BP897, a potent inhibitor of drug-craving and cocaine-seeking behaviors. Mutations in DRD3 lead to sodium retention in the kidney, resulting in hypertension and increased locomotor activity in mice. Multiple isoforms of DRD3 are produced by alternative splicing.

FOR RESEARCH USE ONLY

December 13, 2016