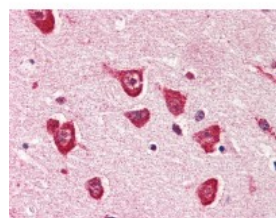




PPM1G Antibody [K1G6]

CATALOG NUMBER: 48-080



Human brain cortex tissue stained with PPM1G Antibody at 5 ug/mL followed by biotinylated anti-mouse IgG secondary antibody, alkaline phosphatase-streptavidin and chromogen.

Specifications

SPECIES REACTIVITY:	Human
TESTED APPLICATIONS:	ELISA, IHC, WB
APPLICATIONS:	PPM1G antibody can be used in Western Blot starting at 1 - 2 ug/mL, and immunohistochemistry starting at 5 ug/mL.
USER NOTE:	Optimal dilutions for each application to be determined by the researcher.
IMMUNOGEN:	Recombinant human PPM1G (317-546aa) purified from E. coli.
HOST SPECIES:	Mouse

Properties

PURIFICATION:	Protein G Column
PHYSICAL STATE:	Liquid
BUFFER:	PBS, pH 7.4, 0.1% sodium azide
STORAGE CONDITIONS:	PPM1G antibody should be stored long term (months) at -20 °C and short term (weeks) at 4 °C. As with all antibodies avoid freeze/thaw cycles.
CLONALITY:	Monoclonal
ISOTYPE:	IgG1,k
CONJUGATE:	Unconjugated

Additional Info

ALTERNATE NAMES:	PPM1G, Phosphatase fin13, PP2CG, PP2C-gamma, Protein phosphatase 1C, PP2C, gamma, PP2CGAMMA, PPM1C, PPP2CG, Protein phosphatase 2c gamma, Protein phosphatase 1G
ACCESSION NO.:	O15355
PROTEIN GI NO.:	3122589
OFFICIAL SYMBOL:	PPM1G

Background

FOR RESEARCH USE ONLY

December 13, 2016