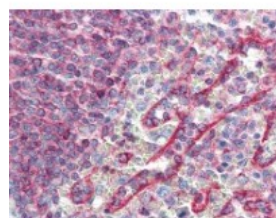




HLA-E Antibody [MEM-E/02]

CATALOG NUMBER: 48-021



Human spleen tissue stained with HLA-E Antibody at 10 ug/mL followed by biotinylated anti-mouse IgG secondary antibody, alkaline phosphatase-streptavidin and chromogen.

Specifications

SPECIES REACTIVITY:	Human, Primate
TESTED APPLICATIONS:	IHC, WB
APPLICATIONS:	IHC-P (10 ug/ml), WB
USER NOTE:	Optimal dilutions for each application to be determined by the researcher.
SPECIFICITY:	Reacts with denatured heavy chain of human HLA-E. HLA-E belongs to the MHC Class I molecules (MHC Class Ib; nonclassical) and it is expressed on the surface of all human cell types
IMMUNOGEN:	Recombinant human HLA-E denatured heavy chain
HOST SPECIES:	Mouse

Properties

PURIFICATION:	Protein A Column
PHYSICAL STATE:	Liquid
BUFFER:	PBS, 15 mM sodium azide, approx., pH 7.4.
STORAGE CONDITIONS:	HLA-E antibody can be stored short term 4 °C. For long term storage aliquot and store at -20 °C. As with all antibodies avoid freeze/thaw cycles.
CLONALITY:	Monoclonal
ISOTYPE:	IgG1
CONJUGATE:	Unconjugated

Additional Info

ALTERNATE NAMES:	HLA-E, EA2.1, HLA-E, MHC HLA-E alpha-2.1, MHC HLA-E alpha-1, EA1.2, HLA-6.2, MHC class I antigen E, QA1
ACCESSION NO.:	P13747
PROTEIN GI NO.:	34395942

OFFICIAL SYMBOL: HLA-E

GENE ID: 3133

Background

FOR RESEARCH USE ONLY

December 13, 2016