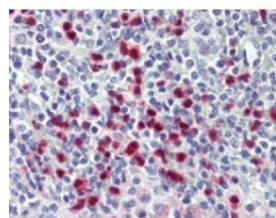




S100A8 Antibody [CF-145] (FITC)

CATALOG NUMBER: 48-019



Human spleen tissue stained with S100A8
Antibody at 1:50 followed by biotinylated
anti-mouse IgG secondary antibody,
alkaline phosphatase-streptavidin and
chromogen.

Specifications

SPECIES REACTIVITY:	Human
TESTED APPLICATIONS:	FACS, IF, IHC, WB
APPLICATIONS:	S100A8 antibody can be used in immunohistochemistry, Western Blot starting at 1 - 2 ug/mL, and immunohistochemistry starting at 2.5 - 5 ug/mL.
USER NOTE:	Optimal dilutions for each application to be determined by the researcher.
IMMUNOGEN:	Purified granulocyte antigen of human origin
HOST SPECIES:	Mouse

Properties

PURIFICATION:	Protein G Column
PHYSICAL STATE:	Liquid
BUFFER:	PBS, 0.02% sodium azide, EIA grade BSA.
STORAGE CONDITIONS:	Store S100A8 antibody at 4 °C or -20 °C. As with all antibodies avoid freeze/thaw cycles.
CLONALITY:	Monoclonal
ISOTYPE:	IgG2b
CONJUGATE:	FITC

Additional Info

ALTERNATE NAMES:	S100A8, 60B8AG, CFAG, CAGA, Calgranulin A, Calgranulin-A, Calprotectin L1L subunit, Cystic fibrosis antigen, CGLA, L1Ag, NIF, p8, Protein S100-A8, MRP8, Urinary stone protein band A, CP-10, MA387, MRP-8
ACCESSION NO.:	P05109
PROTEIN GI NO.:	115442
OFFICIAL SYMBOL:	S100A8
GENE ID:	6279

