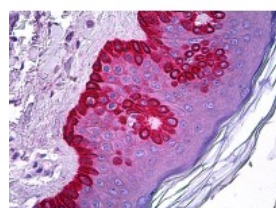




## CELA1 Antibody [4H5]

CATALOG NUMBER: 70-030



Immunohistochemistry of human skin tissue stained using CELA1 Monoclonal Antibody.

### Specifications

<b>SPECIES REACTIVITY:</b>	Human
<b>TESTED APPLICATIONS:</b>	ELISA, IHC, WB
<b>APPLICATIONS:</b>	CELA1 antibody can be used in Western Blot starting at 5 - 2 ug/mL, and immunohistochemistry starting at 5 ug/mL.
<b>USER NOTE:</b>	Optimal dilutions for each application to be determined by the researcher.
<b>IMMUNOGEN:</b>	Recombinant protein
<b>HOST SPECIES:</b>	Mouse

### Properties

<b>PURIFICATION:</b>	Protein A Column
<b>PHYSICAL STATE:</b>	Liquid
<b>BUFFER:</b>	PBS, pH 7.2
<b>STORAGE CONDITIONS:</b>	CELA1 antibody can be stored short term 4 °C. For long term storage aliquot and store at -20 °C. As with all antibodies avoid freeze/thaw cycles.
<b>CLONALITY:</b>	Monoclonal
<b>ISOTYPE:</b>	IgG2a,k
<b>CONJUGATE:</b>	Unconjugated

### Additional Info

<b>ALTERNATE NAMES:</b>	CELA1, El1a, Elastase I, ELA1, Elastase 1, pancreatic, Elastase-1, Pancreatic elastase, Pancreatic elastase I, Porcine pancreatic elastase, Pancreatic elastase 1, Elastase
<b>ACCESSION NO.:</b>	Q9UNI1
<b>PROTEIN GI NO.:</b>	62298049
<b>OFFICIAL SYMBOL:</b>	CELA1
<b>GENE ID:</b>	1990

FOR RESEARCH USE ONLY

December 13, 2016