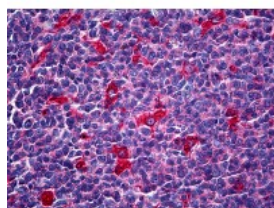




## ATP6V1A Antibody [4F5]

CATALOG NUMBER: 70-026



Immunohistochemistry of human tonsil tissue stained using ATP6V1A Monoclonal Antibody.

### Specifications

<b>SPECIES REACTIVITY:</b>	Human
<b>TESTED APPLICATIONS:</b>	ELISA, IHC, WB
<b>APPLICATIONS:</b>	ATP6V1A antibody can be used in Western Blot starting at 1 - 3 ug/mL, and immunohistochemistry starting at 5 ug/mL.
<b>USER NOTE:</b>	Optimal dilutions for each application to be determined by the researcher.
<b>IMMUNOGEN:</b>	Recombinant protein
<b>HOST SPECIES:</b>	Mouse

### Properties

<b>PURIFICATION:</b>	Protein A Column
<b>PHYSICAL STATE:</b>	Liquid
<b>BUFFER:</b>	PBS, pH 7.2
<b>STORAGE CONDITIONS:</b>	ATP6V1A antibody can be stored short term 4 °C. For long term storage aliquot and store at -20 °C. As with all antibodies avoid freeze/thaw cycles.
<b>CLONALITY:</b>	Monoclonal
<b>ISOTYPE:</b>	IgG1,k
<b>CONJUGATE:</b>	Unconjugated

### Additional Info

<b>ALTERNATE NAMES:</b>	ATP6V1A, ATP6A1, ATP6V1A1, HO68, V-ATPase 69 kDa subunit, V-ATPase 69 kDa subunit 1, VA68, V-ATPase A subunit 1, Vacuolar ATPase isoform VA68, Vma1, V-ATPase subunit A, VPP2
<b>ACCESSION NO.:</b>	P38606
<b>PROTEIN GI NO.:</b>	22096378
<b>OFFICIAL SYMBOL:</b>	ATP6V1A
<b>GENE ID:</b>	523

FOR RESEARCH USE ONLY

December 13, 2016