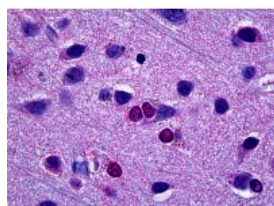




EBF3 Antibody [8D6]

CATALOG NUMBER: 70-025



Immunohistochemistry of human brain
cortex tissue stained using EBF3
Monoclonal Antibody.

Specifications

| | |
|-----------------------------|--|
| SPECIES REACTIVITY: | Human, Mouse |
| TESTED APPLICATIONS: | ELISA, IHC, WB |
| APPLICATIONS: | EBF3 antibody can be used in Western Blot starting at 1 - 3 ug/mL, and immunohistochemistry starting at 5 ug/mL. |
| USER NOTE: | Optimal dilutions for each application to be determined by the researcher. |
| IMMUNOGEN: | Recombinant protein |
| HOST SPECIES: | Mouse |

Properties

| | |
|----------------------------|--|
| PURIFICATION: | Protein A Column |
| PHYSICAL STATE: | Liquid |
| BUFFER: | PBS, pH 7.2 |
| STORAGE CONDITIONS: | EBF3 antibody can be stored short term 4 °C. For long term storage aliquot and store at -20 °C. As with all antibodies avoid freeze/thaw cycles. |
| CLONALITY: | Monoclonal |
| ISOTYPE: | IgG1,k |
| CONJUGATE: | Unconjugated |

Additional Info

| | |
|-------------------------|--|
| ALTERNATE NAMES: | EBF3, COE3, Early B-cell factor 3, O/E-2, Olf-1/EBF-like 2, EBF-3, OE-2, Transcription factor COE3 |
| ACCESSION NO.: | Q9H4W6 |
| PROTEIN GI NO.: | 13959320 |
| OFFICIAL SYMBOL: | EBF3 |
| GENE ID: | 253738 |

Background

