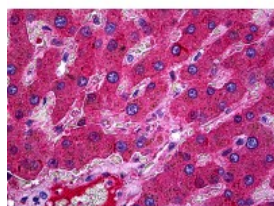




Complement C3 Antibody

CATALOG NUMBER: 70-018



Immunohistochemistry of human liver
tissue stained using Complement C3
Antibody.

Specifications

SPECIES REACTIVITY:	Human
TESTED APPLICATIONS:	ELISA, IHC
APPLICATIONS:	Complement C3 antibody can be used in Western Blot, immunohistochemistry starting at 5 ug/mL, and immunoprecipitation.
USER NOTE:	Optimal dilutions for each application to be determined by the researcher.
SPECIFICITY:	Detects human complement 3c, a polypeptide fragment which is present in C3. C3 plays a central role in the activation of the complement system. Processing of C3 by C3 convertase is the central reaction in both classical and alternative complement pat ...
IMMUNOGEN:	Native human C3 / Complement C3.
HOST SPECIES:	Sheep

Properties

PURIFICATION:	Protein G Column
PHYSICAL STATE:	Liquid
BUFFER:	PBS, 0.09% sodium azide
STORAGE CONDITIONS:	Complement C3 antibody can be stored short term 4 °C. For long term storage aliquot and store at -20 °C. As with all antibodies avoid freeze/thaw cycles.
CLONALITY:	Polyclonal
ISOTYPE:	IgG
CONJUGATE:	Unconjugated

Additional Info

ALTERNATE NAMES:	CPAMD1, Complement C3, C3 and PZP-like alpha-2-macroglobulin domain-containing protein 1, ASP, C3a, C3b, AHUS5, ARMD9, HEL-S-62p
ACCESSION NO.:	P01024
PROTEIN GI NO.:	119370332

OFFICIAL SYMBOL: C3

GENE ID: 718

Background

FOR RESEARCH USE ONLY

December 13, 2016