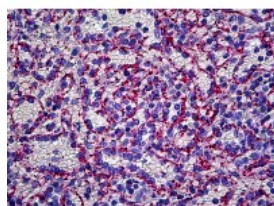




VWF Monoclonal Antibody

CATALOG NUMBER: 70-009



Immunohistochemistry of human spleen,
endothelium stained using VWF
Monoclonal Antibody.

Specifications

SPECIES REACTIVITY:	Human
TESTED APPLICATIONS:	IF, IHC
APPLICATIONS:	VWF antibody can be used in ELISA, Western Blot starting at 1:1000 - 1:3000, and immunohistochemistry starting at 5 ug/mL.
USER NOTE:	Optimal dilutions for each application to be determined by the researcher.
SPECIFICITY:	Recognizes human Von Willebrand Factor (vWF) . No arcs when tested by IEP against human serum. Identity has been confirmed by double diffusion (Ouchterlony) vs. human vWF and an anti-human vWF of known specificity.
IMMUNOGEN:	Human von Willebrand Factor Antigen (vWF) prepared from citrated human plasma (>95%).
HOST SPECIES:	Sheep

Properties

PURIFICATION:	Ion Exchange Chromatography
PHYSICAL STATE:	Liquid
BUFFER:	PBS, pH 7.2, 0.1% sodium azide.
STORAGE CONDITIONS:	VWF antibody can be stored short term 4 °C. For long term storage aliquot and store at -20 °C. As with all antibodies avoid freeze/thaw cycles.
CLONALITY:	Polyclonal
ISOTYPE:	IgG
CONJUGATE:	Unconjugated

Additional Info

ALTERNATE NAMES:	VWF, Coagulation factor VIII VWF, F8VWF, VWD, Von Willebrand factor
ACCESSION NO.:	P04275
PROTEIN GI NO.:	317373549
OFFICIAL SYMBOL:	VWF

Background

FOR RESEARCH USE ONLY

December 13, 2016