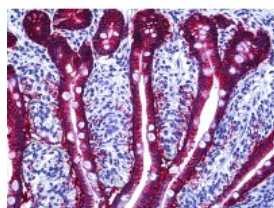




EPCAM Antibody [VU-1D9]

CATALOG NUMBER: 51-998



Immunohistochemistry of human Intestine tissue stained using EPCAM Monoclonal Antibody.

Specifications

SPECIES REACTIVITY:	Human
TESTED APPLICATIONS:	ELISA, FACS, IHC, WB
APPLICATIONS:	EPCAM antibody can be used in ELISA starting at 1:000 - 1:1000, and immunohistochemistry starting at 1.25 ug/mL.
USER NOTE:	Optimal dilutions for each application to be determined by the researcher.
HOST SPECIES:	Mouse

Properties

PURIFICATION:	Purified
PHYSICAL STATE:	Liquid
BUFFER:	PBS, 15 mM sodium azide, pH 7.4
STORAGE CONDITIONS:	Store EPCAM antibody at 4 °C.
CLONALITY:	Monoclonal
ISOTYPE:	IgG1
CONJUGATE:	Unconjugated

Additional Info

ALTERNATE NAMES:	EPCAM, 323/A3, ACSTD1, 17-1A, CD326, EGP, EGP34, Epithelial glycoprotein, GA733-2, HNPCC8, Ep-CAM, ESA, HEGP314, KS 1/4 antigen, KS1/4, KSA, M1S2, MIC18, MK-1, MH99, TROP1, TACST-1, TACSTD1, CD326 antigen, CO-17A, DIAR5, EGP-2, EGP314, EGP40, Epithelial glycoprotein 314, HEA125, Ly74, M4S1, MOC31
ACCESSION NO.:	P16422
PROTEIN GI NO.:	160266056
OFFICIAL SYMBOL:	EPCAM
GENE ID:	4072

Background

