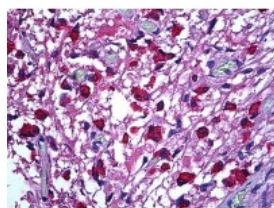




## FSH Antibody [1038]

CATALOG NUMBER: 51-992



Immunohistochemistry of human anterior pituitary tissue stained using FSH Monoclonal Antibody.

### Specifications

<b>SPECIES REACTIVITY:</b>	Human
<b>TESTED APPLICATIONS:</b>	IHC
<b>APPLICATIONS:</b>	FSH antibody can be used in ELISA, Western Blot starting at 1:500 - 1:1000, and immunohistochemistry starting at 5 ug/mL.
<b>USER NOTE:</b>	Optimal dilutions for each application to be determined by the researcher.
<b>IMMUNOGEN:</b>	Human FSH.
<b>HOST SPECIES:</b>	Mouse

### Properties

<b>PURIFICATION:</b>	Ascites
<b>PHYSICAL STATE:</b>	Liquid
<b>BUFFER:</b>	Ascites, 0.1% sodium azide
<b>STORAGE CONDITIONS:</b>	FSH antibody can be stored short term 4 °C. For long term storage aliquot and store at -20 °C. As with all antibodies avoid freeze/thaw cycles.
<b>CLONALITY:</b>	Monoclonal
<b>ISOTYPE:</b>	IgG1
<b>CONJUGATE:</b>	Unconjugated

### Additional Info

<b>ALTERNATE NAMES:</b>	FSHFollitropin subunit beta, Follicle-stimulating hormone beta subunit, FSH-B,
<b>ACCESSION NO.:</b>	P01225
<b>PROTEIN GI NO.:</b>	120552
<b>OFFICIAL SYMBOL:</b>	FSHB
<b>GENE ID:</b>	2488

### Background

