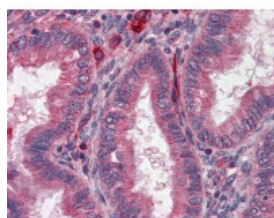




Acetylcholinesterase Antibody

CATALOG NUMBER: 51-987



Immunohistochemistry of human uterus tissue stained using Acetylcholinesterase Antibody.

Specifications

SPECIES REACTIVITY:	Human
TESTED APPLICATIONS:	ELISA, IHC
APPLICATIONS:	Acetylcholinesterase antibody can be used in Western Blot starting at 1 - 3 ug/mL, and immunohistochemistry starting at 10 ug/mL.
USER NOTE:	Optimal dilutions for each application to be determined by the researcher.
IMMUNOGEN:	Native protein
HOST SPECIES:	Sheep

Properties

PURIFICATION:	Protein G Column
PHYSICAL STATE:	Liquid
BUFFER:	PBS, 0.09% sodium azide
STORAGE CONDITIONS:	Acetylcholinesterase antibody should be stored long term (months) at -20 °C and short term (weeks) at 4 °C. As with all antibodies avoid freeze/thaw cycles.
CLONALITY:	Polyclonal
ISOTYPE:	IgG
CONJUGATE:	Unconjugated

Additional Info

ALTERNATE NAMES:	ACHE, ACEE, Acetylcholinesterase, N-ACHE, Yt blood group, ARACHE, YT
ACCESSION NO.:	P22303
PROTEIN GI NO.:	113037
OFFICIAL SYMBOL:	ACHE
GENE ID:	43

Background

