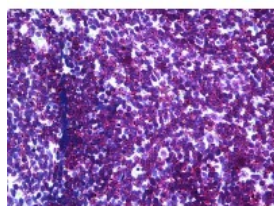




NOD2 Antibody [26mNOD2]

CATALOG NUMBER: 51-985



Immunohistochemistry of mouse lymph
node tissue stained using NOD2
Monoclonal Antibody.

Specifications

SPECIES REACTIVITY:	Mouse
TESTED APPLICATIONS:	IHC, WB
APPLICATIONS:	NOD2 antibody can be used in ELISA, Western Blot, and immunohistochemistry starting at 5 ug/mL.
USER NOTE:	Optimal dilutions for each application to be determined by the researcher.
IMMUNOGEN:	Mouse NOD2
HOST SPECIES:	Rat

Properties

PURIFICATION:	Affinity Purified
PHYSICAL STATE:	Liquid
BUFFER:	PBS, pH 7.2, 0.09% azide
STORAGE CONDITIONS:	Store NOD2 antibody at 4 °C. As with all antibodies avoid freeze/thaw cycles
CLONALITY:	Monoclonal
ISOTYPE:	IgG1,k
CONJUGATE:	Unconjugated

Additional Info

ALTERNATE NAMES:	NOD2, BLAU, CARD15, ACUG, NOD-like receptor C2, NOD2B, NLRC2, IBD1, CLR16.3, PSORAS1
ACCESSION NO.:	Q9HC29
PROTEIN GI NO.:	20137973
OFFICIAL SYMBOL:	NOD2
GENE ID:	64127

Background

FOR RESEARCH USE ONLY

