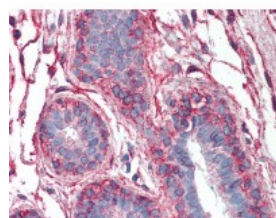




PAK1 Antibody [1E11]

CATALOG NUMBER: 51-975



Immunohistochemistry of human breast tissue stained using PAK1 Monoclonal Antibody.

Specifications

SPECIES REACTIVITY:	Human
TESTED APPLICATIONS:	ELISA, IHC, WB
APPLICATIONS:	PAK1 antibody can be used in Western Blot starting at 1 - 3 ug/mL, and immunohistochemistry starting at 10 ug/mL.
USER NOTE:	Optimal dilutions for each application to be determined by the researcher.
IMMUNOGEN:	PAK1 (NP_002567, 191 a.a. ~ 280 a.a) partial recombinant protein with GST tag. MW of the GST tag alone is 26 KDa.
HOST SPECIES:	Mouse

Properties

PURIFICATION:	Protein A Column
PHYSICAL STATE:	Liquid
BUFFER:	PBS, pH 7.2
STORAGE CONDITIONS:	Store PAK1 antibody at -20 °C or lower. As with all antibodies avoid freeze/thaw cycles.
CLONALITY:	Monoclonal
ISOTYPE:	IgG1,k
CONJUGATE:	Unconjugated

Additional Info

ALTERNATE NAMES:	PAK1, Alpha-PAK, p21-activated kinase 1, p65-PAK, Rac/p21-activated kinase, STE20 homolog, yeast, PAKalpha, PAK-1
ACCESSION NO.:	Q13153
PROTEIN GI NO.:	90111767
OFFICIAL SYMBOL:	PAK1
GENE ID:	5058

FOR RESEARCH USE ONLY

December 13, 2016