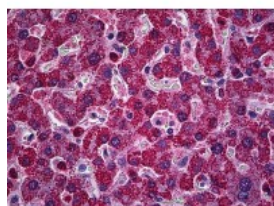




PIM1 Antibody [X1]

CATALOG NUMBER: 51-926



Immunohistochemistry of human liver tissue stained using PIM1 Monoclonal Antibody.

Specifications

SPECIES REACTIVITY:	Human
TESTED APPLICATIONS:	ELISA, IF, IHC
APPLICATIONS:	PIM1 antibody can be used in Western Blot, and immunohistochemistry starting at 1:50.
USER NOTE:	Optimal dilutions for each application to be determined by the researcher.
IMMUNOGEN:	PIM1 (AAH20224, 1 a.a. ~ 314 a.a) full length recombinant protein with GST tag. MW of the GST tag alone is 26 KDa.
HOST SPECIES:	Mouse

Properties

PURIFICATION:	Protein A Column
PHYSICAL STATE:	Liquid
BUFFER:	PBS, pH 7.2
STORAGE CONDITIONS:	PIM1 antibody can be stored short term 4 °C. For long term storage aliquot and store at -20 °C. As with all antibodies avoid freeze/thaw cycles.
CLONALITY:	Monoclonal
ISOTYPE:	IgG2a,k
CONJUGATE:	Unconjugated

Additional Info

ALTERNATE NAMES:	PIM1, Pim-1 kinase 44 kDa isoform, Proviral integration site 1, Oncogene PIM1, PIM, Pim-1, Pim-1 oncogene
ACCESSION NO.:	P11309
PROTEIN GI NO.:	83305339
OFFICIAL SYMBOL:	PIM1
GENE ID:	5292

Background

