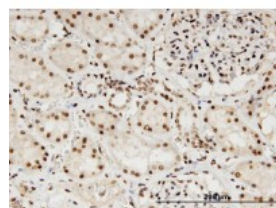




Lamin B1 Antibody [4E4]

CATALOG NUMBER: 51-925



Immunoperoxidase of monoclonal antibody to LMNB1 on formalin-fixed paraffin-embedded human kidney. [antibody concentration 3 ug/mL]

Specifications

SPECIES REACTIVITY:	Human, Mouse
TESTED APPLICATIONS:	ELISA, IHC, WB
APPLICATIONS:	Lamin B1 antibody can be used in Western Blot starting at 1 - 3 ug/mL, and immunohistochemistry starting at 20 ug/mL.
USER NOTE:	Optimal dilutions for each application to be determined by the researcher.
IMMUNOGEN:	LMNB1 (NP_005564, 107 a.a. ~ 186 a.a) partial recombinant protein with GST tag. MW of the GST tag alone is 26 KDa.
HOST SPECIES:	Mouse

Properties

PURIFICATION:	Protein A Column
PHYSICAL STATE:	Liquid
BUFFER:	PBS, pH 7.2
STORAGE CONDITIONS:	Store Lamin B1 antibody at -20 °C or lower. As with all antibodies avoid freeze/thaw cycles.
CLONALITY:	Monoclonal
ISOTYPE:	IgG2a,k
CONJUGATE:	Unconjugated

Additional Info

ALTERNATE NAMES:	LMNB1, ADLD, Lamin B1, Lamin-B1, LMN, LMNB, LMN2
ACCESSION NO.:	P20700
PROTEIN GI NO.:	125953
OFFICIAL SYMBOL:	LMNB1
GENE ID:	4001

FOR RESEARCH USE ONLY

December 13, 2016