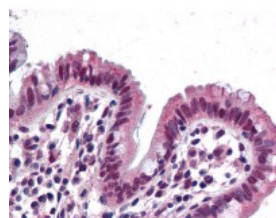




## SMARCB1 Antibody [3E10]

CATALOG NUMBER: 51-916



Immunohistochemistry of human colon  
tissue stained using SMARCB1  
Monoclonal Antibody.

### Specifications

<b>SPECIES REACTIVITY:</b>	Human, Mouse, Rat
<b>TESTED APPLICATIONS:</b>	ELISA, IHC, WB
<b>APPLICATIONS:</b>	SMARCB1 antibody can be used in Western Blot starting at 2 ug/mL, immunohistochemistry starting at 10 ug/mL, immunohistochemistry in frozen tissues starting at 5 - 10 ug/mL, and immunocytochemistry starting at 5 ug/mL.
<b>USER NOTE:</b>	Optimal dilutions for each application to be determined by the researcher.
<b>IMMUNOGEN:</b>	SMARCB1 (NP_003064, 81 a.a. ~ 181 a.a) partial recombinant protein with GST tag. MW of the GST tag alone is 26 KDa.
<b>HOST SPECIES:</b>	Mouse

### Properties

<b>PURIFICATION:</b>	Protein A Column
<b>PHYSICAL STATE:</b>	Liquid
<b>BUFFER:</b>	PBS, pH 7.2
<b>CONCENTRATION:</b>	0.5 mg/ml
<b>STORAGE CONDITIONS:</b>	Aliquot and store SMARCB1 antibody at -20 °C or -80 °C. As with all antibodies avoid freeze/thaw cycles.
<b>CLONALITY:</b>	Monoclonal
<b>ISOTYPE:</b>	IgG1,k
<b>CONJUGATE:</b>	Unconjugated

### Additional Info

<b>ALTERNATE NAMES:</b>	SMARCB1, BRG1-associated factor 47, BAF47, HSNF5, Integrase interactor 1 protein, Kiaa0379, HSNFS, RTPS1, SNF5, Snr1, RDT, Sfh1p, SNF5L1, INI1, MRD15, SNF5 homolog
<b>ACCESSION NO.:</b>	Q12824
<b>PROTEIN GI NO.:</b>	51338799
<b>OFFICIAL SYMBOL:</b>	SMARCB1

Background

FOR RESEARCH USE ONLY

December 13, 2016