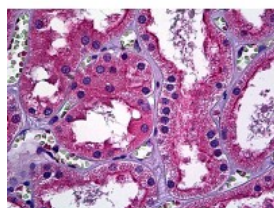




## ERBB3 Antibody [2C7]

CATALOG NUMBER: 51-914



Immunohistochemistry of human kidney tubules stained using ERBB3 Monoclonal Antibody.

### Specifications

<b>SPECIES REACTIVITY:</b>	Human
<b>TESTED APPLICATIONS:</b>	ELISA, IHC
<b>APPLICATIONS:</b>	ERBB3 antibody can be used in Western Blot starting at 1 - 2 ug/mL, and immunohistochemistry starting at 10 ug/mL.
<b>USER NOTE:</b>	Optimal dilutions for each application to be determined by the researcher.
<b>IMMUNOGEN:</b>	ERBB3 (AAH02706, 21 a.a. ~ 332 a.a) full length recombinant protein with GST tag. MW of the GST tag alone is 26 KDa.
<b>HOST SPECIES:</b>	Mouse

### Properties

<b>PURIFICATION:</b>	Protein A Column
<b>PHYSICAL STATE:</b>	Liquid
<b>BUFFER:</b>	PBS, pH 7.2
<b>STORAGE CONDITIONS:</b>	ERBB3 antibody can be stored short term 4 °C. For long term storage aliquot and store at -20 °C. As with all antibodies avoid freeze/thaw cycles.
<b>CLONALITY:</b>	Monoclonal
<b>ISOTYPE:</b>	IgG2b,k
<b>CONJUGATE:</b>	Unconjugated

### Additional Info

<b>ALTERNATE NAMES:</b>	ERBB3, C-erbB-3, C-erbB3, ErbB-3, HER3, p85-sErbB3, p45-sErbB3, MDA-BF-1, ErbB3-S, LCCS2, p180-ErbB3
<b>ACCESSION NO.:</b>	P21860
<b>PROTEIN GI NO.:</b>	119534
<b>OFFICIAL SYMBOL:</b>	ERBB3
<b>GENE ID:</b>	2065

