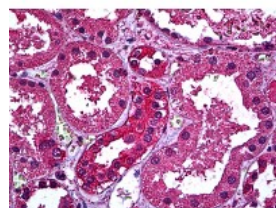




ERBB3 Antibody [2E9]

CATALOG NUMBER: 51-912



Immunohistochemistry of human kidney tissue stained using ERBB3 Monoclonal Antibody.

Specifications

SPECIES REACTIVITY:	Human
TESTED APPLICATIONS:	ELISA, IHC, WB
APPLICATIONS:	ERBB3 antibody can be used in immunofluorescence starting at 1:100 - 1:400, and immunohistochemistry starting at 10 ug/mL.
USER NOTE:	Optimal dilutions for each application to be determined by the researcher.
IMMUNOGEN:	ERBB3 (AAH02706, 1 a.a. ~ 131 a.a) partial recombinant protein with GST tag. MW of the GST tag alone is 26 KDa.
HOST SPECIES:	Mouse

Properties

PURIFICATION:	Protein A Column
PHYSICAL STATE:	Liquid
BUFFER:	PBS, pH 7.2
STORAGE CONDITIONS:	ERBB3 antibody can be stored short term 4 °C. For long term storage aliquot and store at -20 °C. As with all antibodies avoid freeze/thaw cycles.
CLONALITY:	Monoclonal
ISOTYPE:	IgG1,k
CONJUGATE:	Unconjugated

Additional Info

ALTERNATE NAMES:	ERBB3, C-erbB-3, C-erbB3, ErbB-3, HER3, p85-sErbB3, p45-sErbB3, MDA-BF-1, ErbB3-S, LCCS2, p180-ErbB3
ACCESSION NO.:	P21860
PROTEIN GI NO.:	119534
OFFICIAL SYMBOL:	ERBB3
GENE ID:	2065

