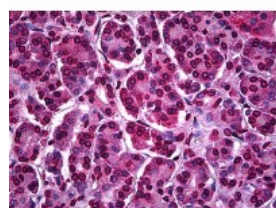




## ATF5 Antibody [4G5]

CATALOG NUMBER: 51-908



Immunohistochemistry of human pancreas  
tissue stained using ATF5 Monoclonal  
Antibody.

### Specifications

<b>SPECIES REACTIVITY:</b>	Human
<b>TESTED APPLICATIONS:</b>	ELISA, IHC, WB
<b>APPLICATIONS:</b>	ATF5 antibody can be used in Western Blot starting at 2 ug/mL, and immunohistochemistry starting at 10 ug/mL.
<b>USER NOTE:</b>	Optimal dilutions for each application to be determined by the researcher.
<b>IMMUNOGEN:</b>	ATF5 (AAH05174, 101 a.a. ~ 200 a.a) partial recombinant protein with GST tag. MW of the GST tag alone is 26 KDa.
<b>HOST SPECIES:</b>	Mouse

### Properties

<b>PURIFICATION:</b>	Protein A Column
<b>PHYSICAL STATE:</b>	Liquid
<b>BUFFER:</b>	PBS, pH 7.2
<b>STORAGE CONDITIONS:</b>	ATF5 antibody can be stored short term 4 °C. For long term storage aliquot and store at -20 °C. As with all antibodies avoid freeze/thaw cycles.
<b>CLONALITY:</b>	Monoclonal
<b>ISOTYPE:</b>	IgG2a,k
<b>CONJUGATE:</b>	Unconjugated

### Additional Info

<b>ALTERNATE NAMES:</b>	ATF5, HMFN0395, Transcription factor ATFx, ATFX
<b>ACCESSION NO.:</b>	Q9Y2D1
<b>PROTEIN GI NO.:</b>	308153647
<b>OFFICIAL SYMBOL:</b>	ATF5
<b>GENE ID:</b>	22809

### Background

