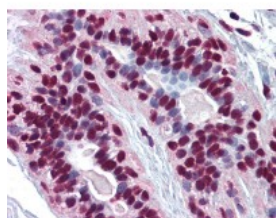




CREB1 Antibody [3F1-1B2]

CATALOG NUMBER: 51-902



Immunohistochemistry of human breast tissue stained using CREB1 Monoclonal Antibody.

Specifications

SPECIES REACTIVITY:	Human
TESTED APPLICATIONS:	ELISA, IF, IHC, WB
USER NOTE:	Optimal dilutions for each application to be determined by the researcher.
IMMUNOGEN:	CREB1 (AAH10636, 1 a.a. ~ 342 a.a) full length recombinant protein with GST tag. MW of the GST tag alone is 26 KDa.
HOST SPECIES:	Mouse

Properties

PURIFICATION:	Protein A Column
PHYSICAL STATE:	Liquid
BUFFER:	PBS, pH 7.2
STORAGE CONDITIONS:	Aliquot and store CREB1 antibody at -20 °C or -80 °C. As with all antibodies avoid freeze/thaw cycles.
CLONALITY:	Monoclonal
ISOTYPE:	IgG1,k
CONJUGATE:	Unconjugated

Additional Info

ALTERNATE NAMES:	CREB1, CREB-1, Transactivator protein, CREB
ACCESSION NO.:	P16220
PROTEIN GI NO.:	117434
OFFICIAL SYMBOL:	CREB1
GENE ID:	1385

Background

FOR RESEARCH USE ONLY

