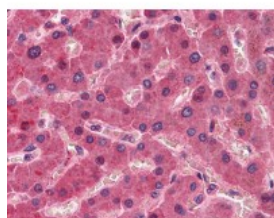




Factor 12 Antibody

CATALOG NUMBER: 51-861



Immunohistochemistry of human liver tissue stained using Factor 12 Antibody.

Specifications

SPECIES REACTIVITY:	Human
TESTED APPLICATIONS:	ELISA, IHC, WB
APPLICATIONS:	Factor 12 antibody can be used in Western Blot starting at 1 - 2 ug/mL, and immunohistochemistry starting at 5 ug/mL.
USER NOTE:	This product ships on dry ice.
SPECIFICITY:	Recognises Factor XII
IMMUNOGEN:	Full length native protein (purified) (Human).
HOST SPECIES:	Sheep

Properties

PURIFICATION:	Protein G Column
PHYSICAL STATE:	Liquid
BUFFER:	0.05M Sodium Phosphate; 0.1M NaCl; 1mM EDTA; pH 6.6
STORAGE CONDITIONS:	Store Factor 12 antibody at -80 °C. As with all antibodies avoid freeze/thaw cycles.
CLONALITY:	Polyclonal
ISOTYPE:	IgG
CONJUGATE:	Unconjugated

Additional Info

ALTERNATE NAMES:	F12, Beta-factor XIIa part 2, Beta-factor XIIa part 1, Coagulation factor XII, F12 deficiency, Factor XII, Factor XII deficiency, HAE3, HAEX, Hageman factor, HAF
ACCESSION NO.:	P00748
PROTEIN GI NO.:	317373446
OFFICIAL SYMBOL:	F12
GENE ID:	2161

Background

