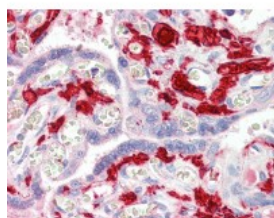




Factor 13A1 Antibody

CATALOG NUMBER: 51-856



Human placenta tissue stained with F13A1
Antibody at 5 ug/mL followed by
biotinylated secondary antibody, alkaline
phosphatase-streptavidin and chromogen.

Specifications

SPECIES REACTIVITY:	Human
TESTED APPLICATIONS:	ELISA, IHC
APPLICATIONS:	Factor 13A1 antibody can be used in Western Blot, and immunohistochemistry starting at 1:50.
USER NOTE:	Optimal dilutions for each application to be determined by the researcher.
SPECIFICITY:	Specific for Factor XIII as determined by immunoelectrophoresis and ELISA.
IMMUNOGEN:	Factor XIII subunit A purified from human plasma.
HOST SPECIES:	Sheep

Properties

PURIFICATION:	Immunoaffinity Chromatography
PHYSICAL STATE:	Liquid
BUFFER:	0.01 M HEPES, pH 7.4, 0.15 M sodium chloride, 50% glycerol. No preservatives added.
STORAGE CONDITIONS:	Factor 13A1 antibody should be stored long term (months) at -20 °C and short term (weeks) at 4 °C. As with all antibodies avoid freeze/thaw cycles.
CLONALITY:	Polyclonal
ISOTYPE:	IgG
CONJUGATE:	Unconjugated

Additional Info

ALTERNATE NAMES:	F13A1, Coagulation factor XIIIa, Factor XIIIa, Fibrinoligase, FSF, A subunit, Transglutaminase. plasma, Transglutaminase A chain, F13A, TGASE
ACCESSION NO.:	P00488
PROTEIN GI NO.:	119720
OFFICIAL SYMBOL:	F13A1
GENE ID:	2162

