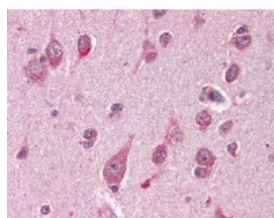




GAPDH Antibody

CATALOG NUMBER: 51-854



Human brain cortex tissue stained with GAPDH Antibody at 1:100 followed by biotinylated secondary antibody, alkaline phosphatase-streptavidin and chromogen.

Specifications

SPECIES REACTIVITY:	E. coli, Human, Rabbit
TESTED APPLICATIONS:	ELISA, IHC, WB
APPLICATIONS:	GAPDH antibody can be used in ELISA, immunohistochemistry starting at 10 ug/mL, and flow cytometry.
USER NOTE:	Optimal dilutions for each application to be determined by the researcher.
SPECIFICITY:	Recognizes human, rabbit and E. coli. Suitable applications include ELISA & WB.
IMMUNOGEN:	GAPDH synthetic peptide
HOST SPECIES:	Sheep

Properties

PURIFICATION:	IgG Fractionation
PHYSICAL STATE:	Liquid
BUFFER:	PBS, pH 7.2 with 0.1% NaN ₃ added as a preservative
STORAGE CONDITIONS:	Store GAPDH antibody at -20 °C.
CLONALITY:	Polyclonal
CONJUGATE:	Unconjugated

Additional Info

ALTERNATE NAMES:	GAPDH, A1 40 kd subunit, Activator 1 40 kd subunit, G3PD, GAPD, G3pdh, Rfc40, Rf-c 40 kd subunit
ACCESSION NO.:	P04406
PROTEIN GI NO.:	120649
OFFICIAL SYMBOL:	GAPDH
GENE ID:	2597

Background

