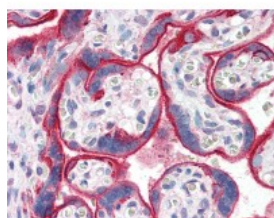




EGFR Antibody

CATALOG NUMBER: 51-852



Human placenta tissue stained with EGFR
Antibody at 5 ug/mL followed by
biotinylated secondary antibody, alkaline
phosphatase-streptavidin and chromogen.

Specifications

SPECIES REACTIVITY:	Chicken, Human, Mouse, Rat
TESTED APPLICATIONS:	ICC, IHC, IP, WB
APPLICATIONS:	EGFR antibody can be used in Western Blot starting at 1:250 - 1:500, immunohistochemistry starting at 5 ug/mL, and immunocytochemistry starting at 1:100 - 1:200.
USER NOTE:	Optimal dilutions for each application to be determined by the researcher.
SPECIFICITY:	This EGFR antibody recognizes a region of the internal domain. Antibody binding blocks phosphorylation and does not interfere with EGF binding.
IMMUNOGEN:	A synthetic 20 amino acid peptide of human EGFR representing a portion of the internal domain proximal to a phosphorylation region
HOST SPECIES:	Sheep

Properties

PURIFICATION:	Protein G Column
PHYSICAL STATE:	Liquid
BUFFER:	PBS buffer pH 7.4
STORAGE CONDITIONS:	Store EGFR antibody at 4 °C or -20 °C. As with all antibodies avoid freeze/thaw cycles.
CLONALITY:	Polyclonal
CONJUGATE:	Unconjugated

Additional Info

ALTERNATE NAMES:	EGFR, EGF receptor, ERBB, ERBB1, MENA, Panitumumab, PIG61, Proto-oncogene c-ErbB-1, V-erb-b homolog, EGF-R, HER1
ACCESSION NO.:	P00533
PROTEIN GI NO.:	2811086
OFFICIAL SYMBOL:	EGFR

GENE ID: 1956

Background

FOR RESEARCH USE ONLY

December 13, 2016