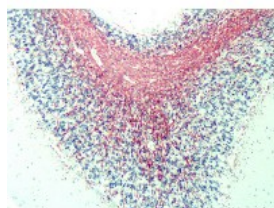




## MBP Antibody [12]

CATALOG NUMBER: 51-838



Immunohistochemistry of human myelin tissue stained using MBP Monoclonal Antibody.

### Specifications

<b>SPECIES REACTIVITY:</b>	Bovine, Chicken, Guinea Pig, Human, Mammal, Mouse, Pig, Rabbit, Rat, Sheep
<b>TESTED APPLICATIONS:</b>	ELISA, IHC, RIA, WB
<b>APPLICATIONS:</b>	MBP antibody can be used in Western Blot, and immunohistochemistry starting at 1:50.
<b>USER NOTE:</b>	Optimal dilutions for each application to be determined by the researcher.
<b>SPECIFICITY:</b>	Reacts with myelin basic protein from a wide range of species. The Reacts weakly with peptides ending in the Phe 91 where the 91-92 Phe-Phe bond is broken. Synthetic peptide Reacts very well, as does intact MBP. Further epitope analysis indicates bin ...
<b>IMMUNOGEN:</b>	Bovine MBP ( AA 82-87 )
<b>HOST SPECIES:</b>	Rat

### Properties

<b>PHYSICAL STATE:</b>	Liquid
<b>BUFFER:</b>	0.09% sodium azide.
<b>STORAGE CONDITIONS:</b>	Store MBP antibody at 4 °C or -20 °C. As with all antibodies avoid freeze/thaw cycles.
<b>CLONALITY:</b>	Monoclonal
<b>ISOTYPE:</b>	IgG2a
<b>CONJUGATE:</b>	Unconjugated

### Additional Info

<b>ALTERNATE NAMES:</b>	MBP, Myelin A1 protein, Myelin basic protein
<b>ACCESSION NO.:</b>	P02686
<b>PROTEIN GI NO.:</b>	17378805
<b>OFFICIAL SYMBOL:</b>	MBP
<b>GENE ID:</b>	4155

### Background

