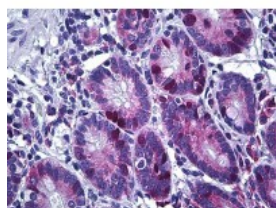




KIFC1 Antibody [2B9]

CATALOG NUMBER: 51-721



Immunohistochemistry of human small intestine tissue stained using KIFC1 Monoclonal Antibody.

Specifications

SPECIES REACTIVITY:	Human
TESTED APPLICATIONS:	ELISA, IF, IHC, WB
APPLICATIONS:	KImmunofluorescenceC1 antibody can be used in Western Blot starting at 2 - 4 ug/mL, and immunohistochemistry starting at 10 ug/mL.
USER NOTE:	Optimal dilutions for each application to be determined by the researcher.
IMMUNOGEN:	Recombinant protein
HOST SPECIES:	Mouse

Properties

PURIFICATION:	Protein A Column
PHYSICAL STATE:	Liquid
BUFFER:	PBS, pH 7.2
STORAGE CONDITIONS:	KIFC1 antibody can be stored short term 4 °C. For long term storage aliquot and store at -20 °C. As with all antibodies avoid freeze/thaw cycles.
CLONALITY:	Monoclonal
ISOTYPE:	IgG2a,k
CONJUGATE:	Unconjugated

Additional Info

ALTERNATE NAMES:	KIFC1, HSET, KNSL2, Kinesin-like 2, Kinesin-related protein, Kinesin family member C1, Kinesin-like protein KIFC1, Kinesin-like protein 2, Kinesin-related protein HSET
ACCESSION NO.:	Q9BW19
PROTEIN GI NO.:	20138710
OFFICIAL SYMBOL:	KIFC1
GENE ID:	3833

